

1



## EVO Mock Pursuit Scenarios



U-Turn

# U-Turn

- ▲ Signal all movement
- ▲ While stopped update dispatch
- ▲ Your head is on a swivel
  - Eyes check inside mirror and outside left mirror
  - Check for on-coming traffic
  - Then over your shoulder
- ▲ Smoothly accelerate through the u-turn

4



Pass on Hillcrest

# Pass on Hillcrest

- ▲ Do not go left of center on or approaching a hillcrest
- ▲ Stay back from the obstacle car far enough for that driver to see your wiggles
- ▲ Pass the obstacle car after cresting the hill unless it moves completely out of your lane
- ▲ Headlights back to high beam

7



Evasive/Old man



# Evasive/Old man

- ▲ Sometimes people abruptly stop in your lane as their response to your lights and siren
- ▲ You must stop in your lane behind the obstacle car, far enough back to maneuver
- ▲ Check for any on-coming traffic
- ▲ Check mirrors and over your shoulder before moving your car
- ▲ Signal lane change out and back into your lane

What is the difference between a car that stops on a curve verses on a straightaway?

11

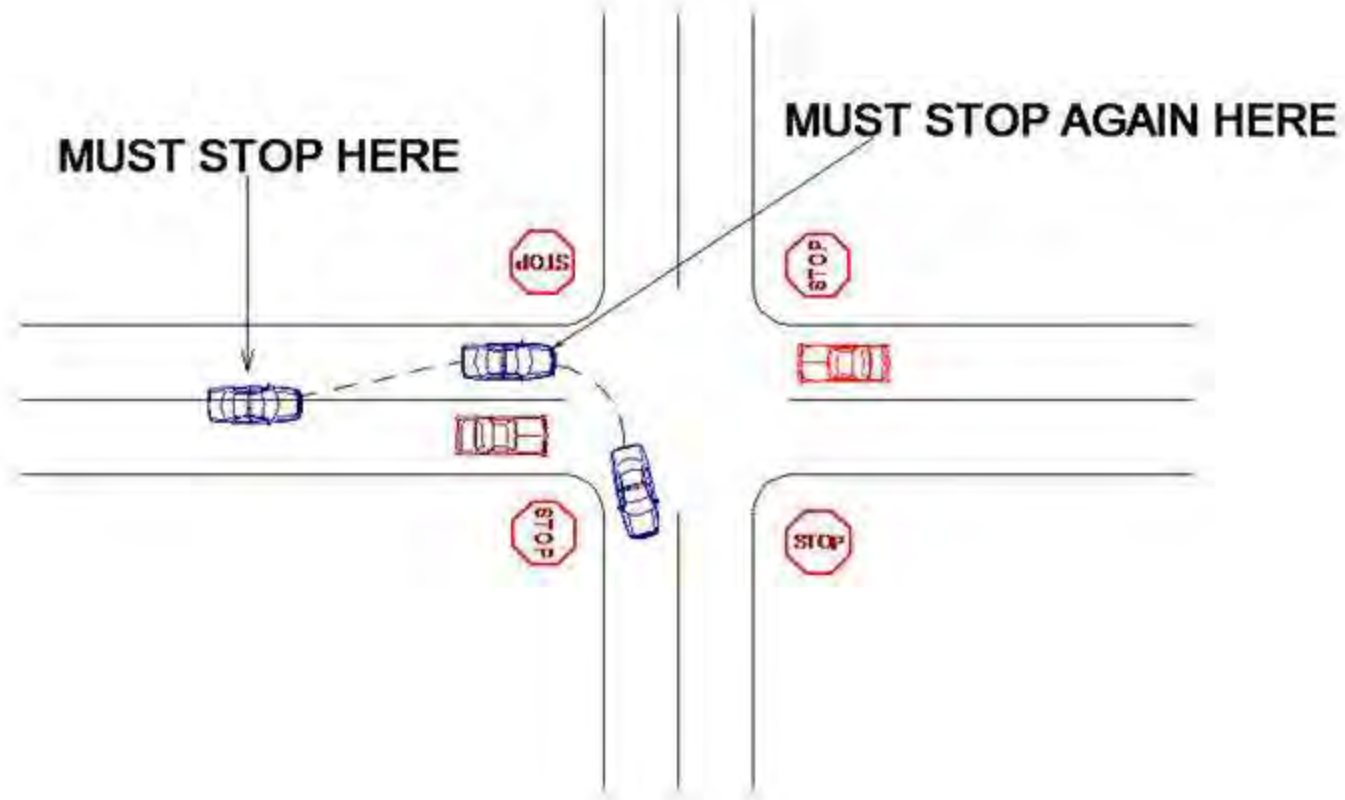


# Right Turn Intersection

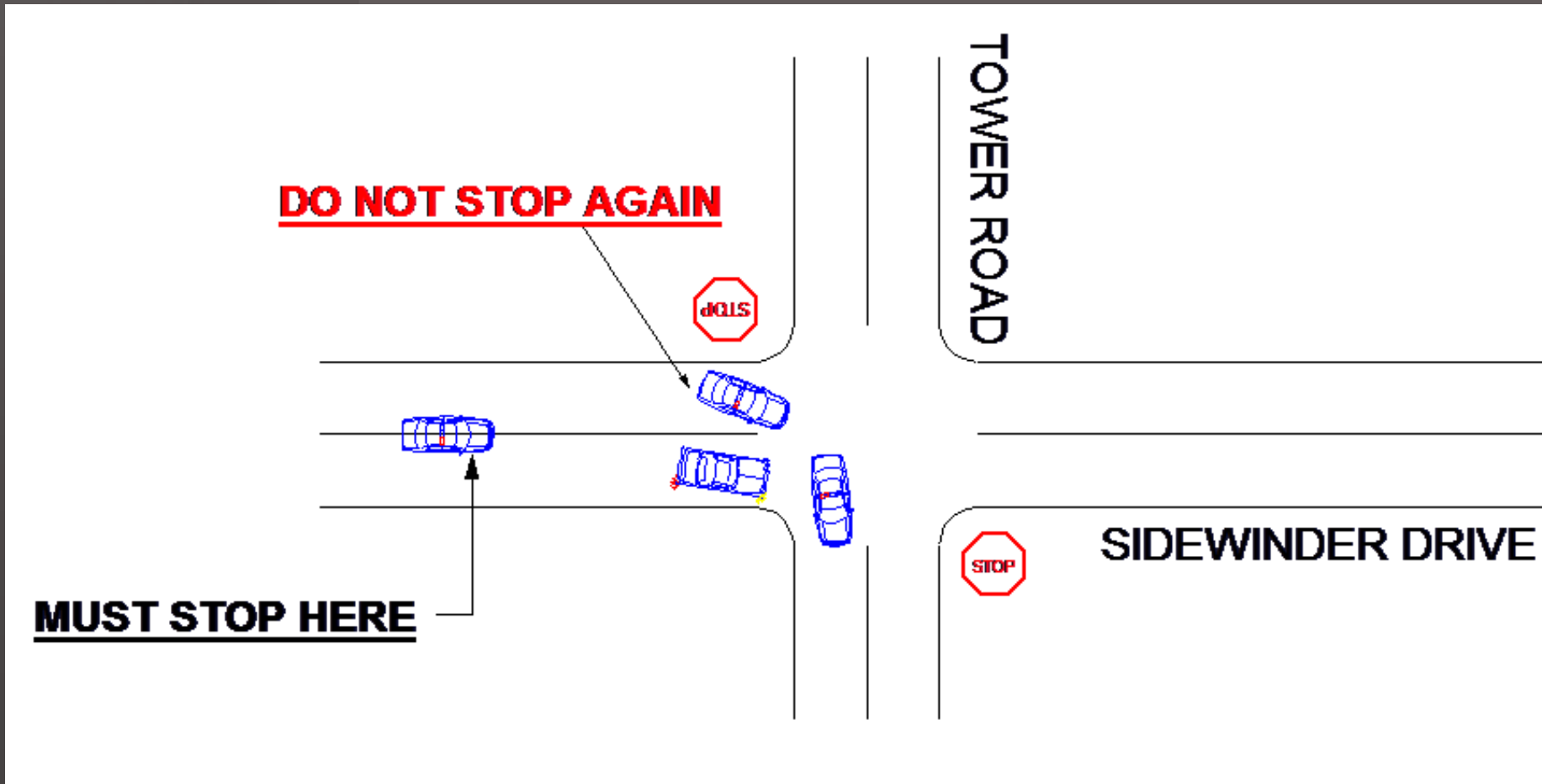
# Right Turn Intersection

- ▲ Change Siren pitch and activate wig-wags
- ▲ On two-lane bi-directional roadways you must stop behind any vehicle stopped or coming to a stop at the intersection in your lane (Straddling the center line)
- ▲ Stop far enough back from the vehicle to maneuver
- ▲ Quickly ensure other traffic at the intersection has stopped and yielded to you
- ▲ Signal and move alongside the obstacle, stopping for the traffic control device.
- ▲ Continue through the intersection after clearing each lane.
- ▲ Headlights back to high-beam

# Controlled Intersection Right Turn



# Right Turn Intersection, Through Street



# Straight Thru Intersection



# Straight Thru Intersection

- ▲ Change siren pitch and activate Wig-wags
- ▲ On approach to the intersection your head should be on a swivel
- ▲ If the intersection is occupied, you must stop before entering the intersection and wait until it is clear to proceed
- ▲ Headlights back to high-beam

18



Left Hand Turn

# Left Hand Turn

- ▲ Change siren pitch and activate wig-wags
- ▲ Take your foot off the gas pedal and cover the brake
- ▲ Do not brake if the on-coming, left-turning vehicle is stopped
- ▲ Drift right to increase the distance between you and the on-coming vehicle
- ▲ As you meet the on-coming vehicle, move your foot back to the gas and accelerate
- ▲ Switch your lights back to high-beams

21



# Tactical Pass

(Single Vehicle)

# Tactical Pass (Single Vehicle)

- ▲ Change siren pitch and activate wig-wags
- ▲ Move left to straddle the center line
- ▲ Stay back far enough to maneuver
- ▲ Hesitate on your straddle only long enough to verify it is safe to pass
- ▲ Signal lane change and move left. Accelerate only after fully entering the new lane
- ▲ Signal lane change back to your lane. Look over your shoulder, and then move smoothly and safely back to original lane
- ▲ Headlights back to high-beam

24





# Two Car, Multi-lane Pass

(Two Vehicles Side by Side)

# Two Car, Multi-lane Pass

(Two Vehicles Side by Side)

- ▲ Change siren pitch and activate wig-wags  
Get behind the vehicle on the right first.
  - Stay back far enough for drivers to see your wig-wags
  - By law , drivers must move right and stop
  - Your are making a space for the car on the left to move to the right
  
- ▲ When the right side car moves out of the way, signal and move left to get the left side car to move
  
- ▲ When the left side car moves, pass in the left lane
  - For range training safety, move back to the right lane
  
- ▲ Headlights back to high-beam

27



**Questions?**

# EVO Mock Pursuit Scenarios

## End

29



Utah Peace Officer Standards and Training

